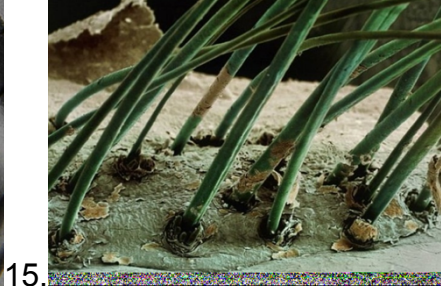
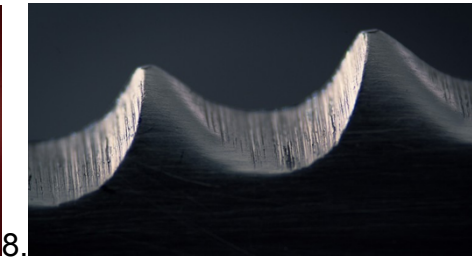
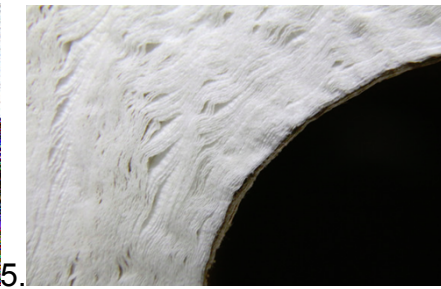
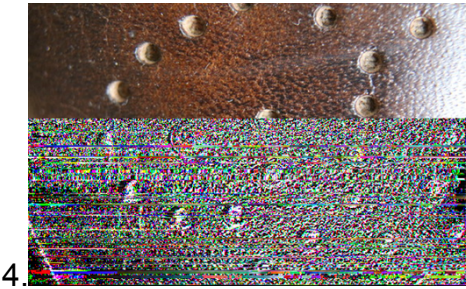
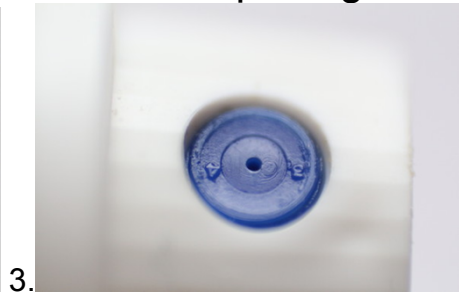
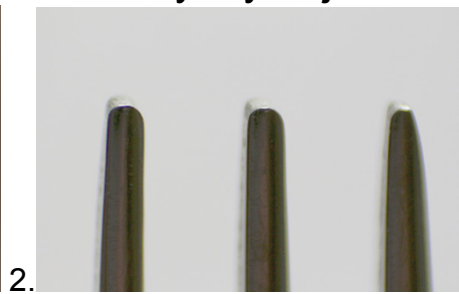


CLOSE-UP... identify these everyday objects from a close-up image



CLOSE-UP ANSWERS

- 1- Top of a candle
- 2- End of a fork
- 3- Nozzle of an aerosol can
- 4- Pattern on toe of brogue shoes
- 5- End view of loo-roll, or kitchen roll
- 6- Cigarette lighter
- 7- Ballpoint pen
- 8- Serrated knife blade
- 9- Grain of sugar
- 10-Cornflake
- 11-Inside a piano
- 12-Sting of a wasp
- 13-Pencil
- 14-Car tyre
- 15-Human eyelashes